



August 2022



We are proudly flying the Green Flag, an international quality benchmark for parks and green spaces, which we have achieved for the fourth year running.

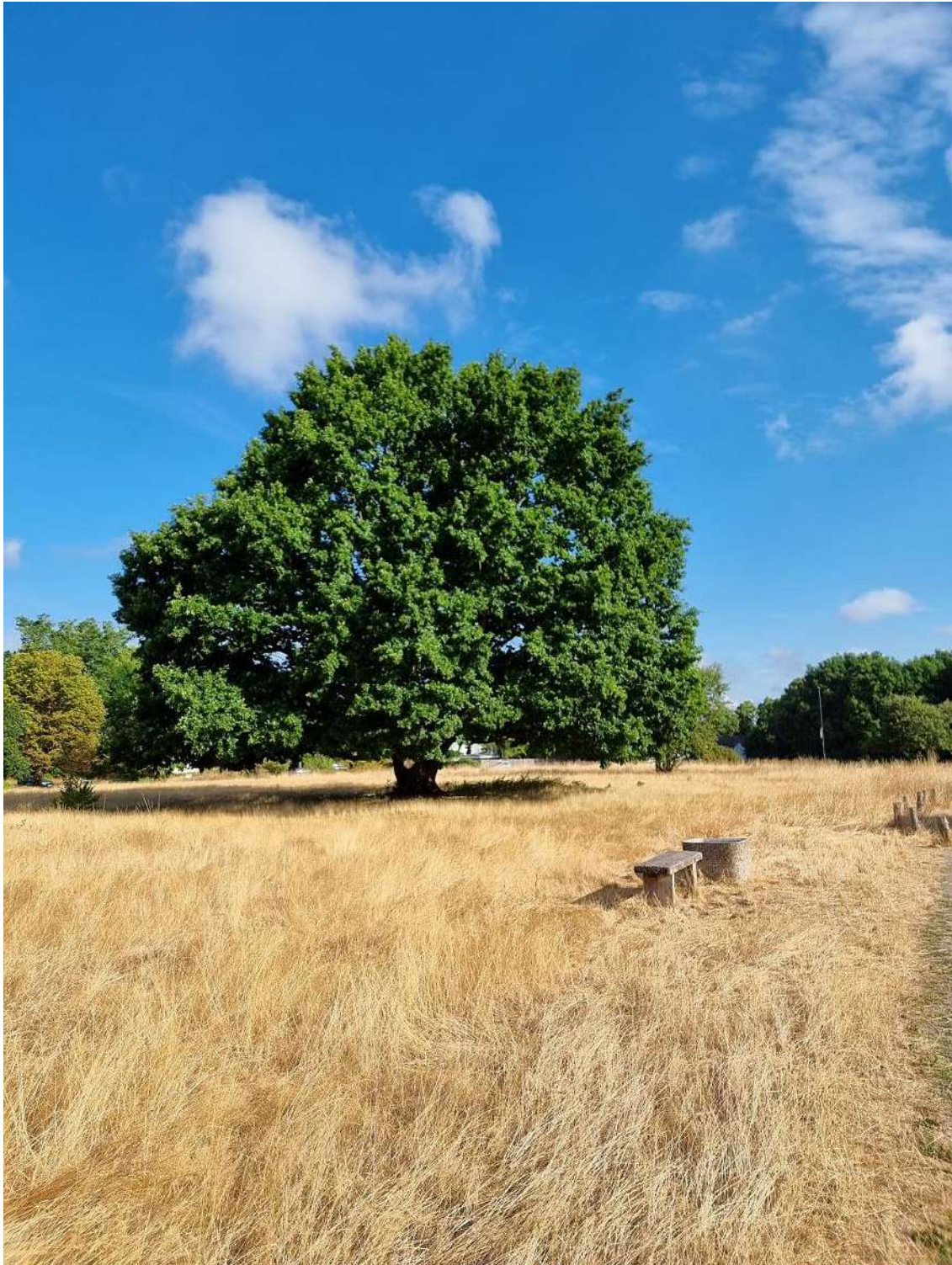
In his report, following a day-long visit, Chris Worman MBE, the most senior Green Flag judge, commented,

“The natural landscape of the Commons makes it a very attractive and inviting place to visit. The residents and visitors to Chislehurst are very lucky.

To find a green space where the Trustees and Volunteers play such an active role in the management and maintenance of the site is a rare find. It was great to meet so many key people during my visit, and in particular, the enthusiastic and knowledgeable Volunteers undertaking the survey work, and those cutting back the vegetation. This sheer level of volunteering is exemplary, and their dedication and enthusiasm are priceless.

There feels a true partnership between the Trustees, staff, Volunteers, *Idverde* and Council, with everyone playing their part. The results of this pro-active collaboration are evident to see as you walk around the site and understand the varied and complex landscape features that the commons comprise.

It was a privilege to visit and be shown around, and my sincere congratulations go to everyone involved.”



The Commons play a vital role in providing peaceful places to relax, exercise and socialise safely, and to enjoy beautiful havens for wildlife and biodiversity. In our newsletters we aim to show you some of the work involved in managing, maintaining and developing them.

**An Opportunity to Visit Some of the Beautiful
Sites on St. Paul's Cray Common**



Come for a stroll with us to the heathland of St. Paul's Cray Common. Find out about its importance to the biodiversity of the area, and how we are working to improve it.

Date: Wednesday 24th August

Time: 2pm

A free event.

The walk should last approximately 1 ½ hours.

Booking essential.

Full details will be sent with reservation.

We look forward to seeing you!

Come for a stroll with us to the heathland of St. Paul's Cray Common. Find out about its importance to the biodiversity of the area, and how we are working to improve it.

Date: Wednesday 24th August

Time: 2 pm

A free event.

The walk should last approximately 1 1/2 hours.

Booking is essential.

Full details will be sent with the reservation.

We look forward to seeing you!

Book your place on our walk by scanning the QR code below or by clicking the link to Ticketsource.

Booking opens on Monday 8th August at 10 am.

Please don't bother to print your E-Ticket or bring it with you. These won't be required. We'll have a list of your names.



<http://www.ticketsource.co.uk/chiscommons>

Our Magnificent Keepers and Volunteers

Our Keepers and Volunteers have been hard at work as usual this month, despite the heat and dry weather.



The grass at the Ramblers Rest area was cut for the second time this year in July. As explained in previous Newsletters, we are conducting an experiment to try to improve the quality of the grassland and encourage the growth of finer grasses and a greater range of wildflowers. So the cuttings are raked off and not left to rot down, thereby depriving the soil of nutrients which promote the growth of coarser grasses.



Another recent task has been cutting back foliage on Centre Common Road which was obscuring streetlights and brushing the tops of buses. This work involved careful management to ensure that the traffic flow was not too badly affected, and that everyone was kept safe.

Support Within the Wider Chislehurst Community

The 180 acres of common land have been valued and protected by the community of Chislehurst for over 1,000 years.

They are still at the centre of daily life here, and we are pleased this month to

report on just some of the great support we receive from the community today.

The poster is hand-drawn on a white background with a green border. The title 'How to Safely feed the birds and ducks' is written in large, colorful letters at the top. Below the title, the poster is divided into two columns. The left column is titled 'Food that is HARMFUL to us:' and lists 'bread', 'cakes', 'biscuits', and 'pastries' with a large red 'X' next to the list. The right column is titled 'Food that is SAFE For us:' and lists 'seeds' and 'grains' with a large green checkmark next to the list. In the center, there are two hand-drawn ducks, one above the other. At the bottom, the text reads 'if we have stopped eating please stop feeding us!' with a small logo for Mead Road Infant School in the bottom right corner.

How to Safely feed the birds and ducks

Food that is **HARMFUL** to us:

- bread
- cakes
- biscuits
- pastries

Food that is **SAFE** For us:

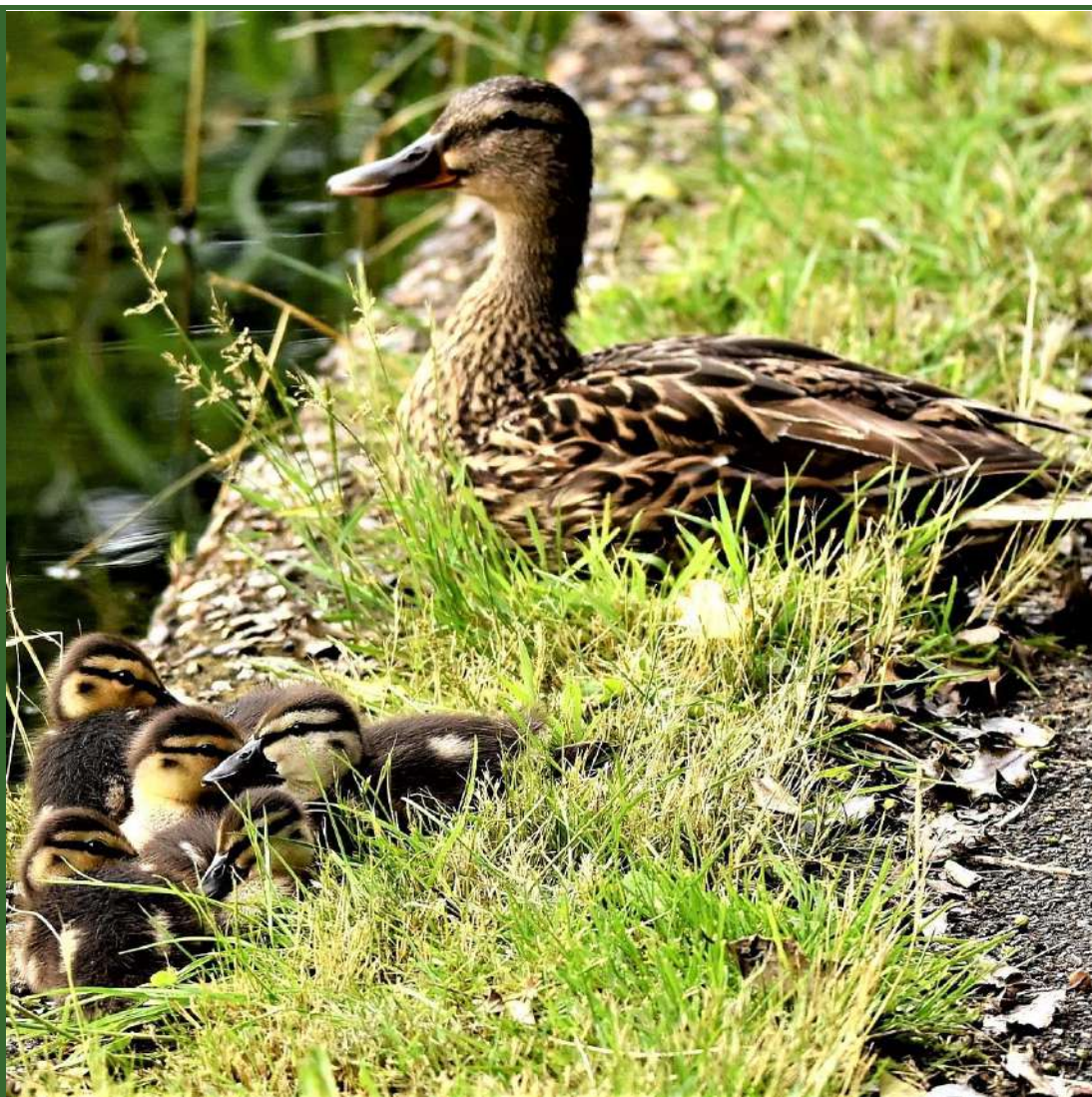
- seeds
- grains

if we have stopped eating please stop feeding us!

A BIG 'THANK YOU'
to the children of Mead Road Infant School!

As part of their study of the local environment, they have made some wonderful posters that give information about healthy eating for the water birds that live at the pond.

A selection of their posters can now be seen at Prickend Pond and will be changed in rotation over the summer.

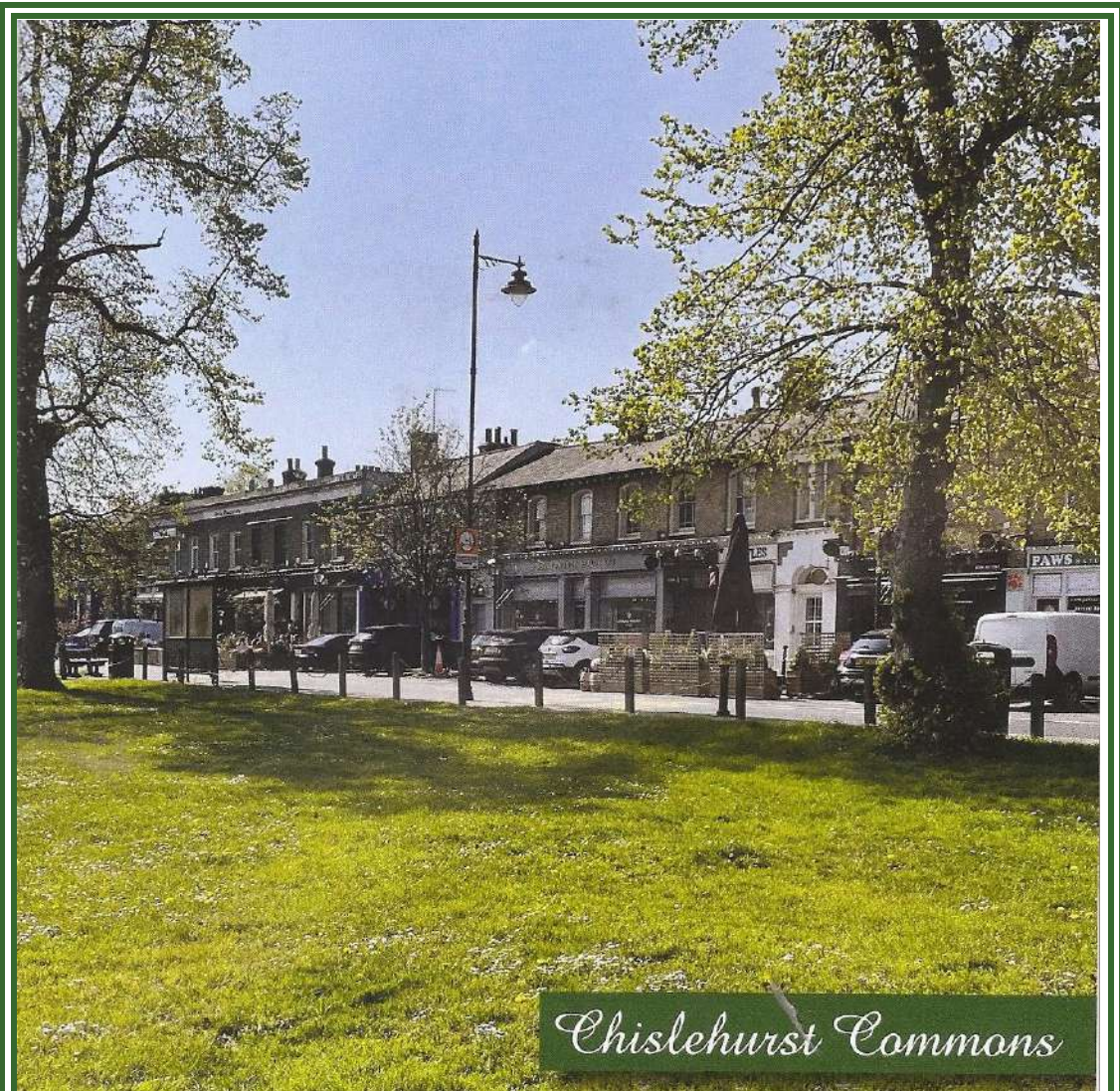


Get your bird seed at Champion Wines!

Visitors to the ponds often like to feed the waterfowl, although there is plenty of their natural food around.

Champion Wines has kindly agreed to stock packets of seed on our behalf, which is healthier for the birds than bread or products made from flour.

All donations will go towards the upkeep of Chislehurst Commons.



Paper Lane in Chislehurst High Street stocks Chislehurst Commons Greetings Cards showing a selection of views.

All profits go towards maintaining our beautiful Commons.



Will you be a true friend of your local Commons?

The 180 acres are protected and managed under an Act of Parliament.

However, the Act made no provision for funding, and we rely on the generosity of the community.

We have two full-time Keepers, whose knowledge and dedication are invaluable. Everyone else who works to preserve and maintain the area does so voluntarily.

If you would like to support our work,

you can donate via our

website www.chislehurstcommons.uk
or via PayPal Giving

Thank you!

Surveys

The Green Flag Assessor highlighted the importance of surveying, to inform future planning. The information gathered is key to managing the area for biodiversity and resilience to changing weather patterns.

Grasslands



We have continued to monitor and record the flowering plants growing in the different sections of our grasslands. Although the drought has taken its toll, we have still been able to find flowers such as the wild carrot shown in the photo above, harebells, yarrow, knapweed, cat's ear, and hawk's-beard.

Butterflies



Two recent butterfly walks, one on Chislehurst Commons and the other on St. Paul's Cray Common, recorded six different species - the gatekeeper, pictured above, meadow brown, large white, common blue, speckled wood and large skipper.

Over time we have recorded at least 24 different species in different areas of the Commons.

Monthly Bird Count at the Ponds



At the July count there were the regular sightings of mallards, Canada geese, and coots, and a rather late clutch of five moorhen chicks, but the really exciting find was this female brown hawker dragonfly.

She is shown depositing eggs into water-logged wood. This is a new (in recent times) record for the Commons and makes a total of 16 different species recorded in the last few years.

Amphibians and Reptiles



The refuges provided by KRAG (Kent Reptile and Amphibian Group) are monitored every two weeks.

The most recent check recorded a lizard and four slow worms.

More Fabulous Fungi



This is a bracket fungus known as chicken of the woods. It grows mainly on oak trees and is a vital species supporting a variety of wildlife.

The Commons in Close-up



The long, hazy days of summer are a good time to enjoy the natural world around us in Chislehurst, and there is beauty wherever we look on our

Commons.

We will continue to do our best to protect and preserve them for present and future generations.

[Click here to access a map of the Commons](#)



We are registered with Amazon Smile.

Visit smile.amazon.co.uk instead of the normal Amazon website and select Chislehurst Commons, and, for everything you buy, Amazon will donate 0.5% to help maintain the Commons. This is another excellent opportunity to support the greenspace on your doorstep.

**Show your support for Chislehurst's commonland
while you shop!**

THANK YOU!

Thanks for this month's photos to - Don Drage, Peter Edwards, Kevin Jennings, Mary Wheeler and Peter Woodward.

Thanks also to the Editorial Team - Christine Wearn, Ross Wearn and Mary Wheeler.



Chislehurst Commons are proud to display the Green Flag Award logo.

[If you would care to donate, please click here](#)

[or donate online here](#)

Privacy Policy



Copyright © 2022 Chislehurst Commons, All rights reserved.

You are receiving this email because you opted in via our website

Our mailing address is:

Chislehurst Commons
The Old Fire Station
Hawkwood Lane
Chislehurst, Kent BR7 5PW
United Kingdom

[Add us to your address book](#)

Want to change how you receive these emails?

You can [update your preferences](#) or [unsubscribe from this list](#).

